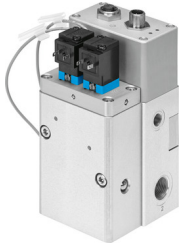


Valve unit

VPCB-6-L-8-G38-10-F-D3-T22-M

FESTO

Part number: 8071579



Data sheet

Feature	Value
Valve function	3-way proportional pressure control valve
Type code	VPCB
Structural design	Piston gate valve with integrated pressure sensors
Type of control	Direct
Actuation type	Electrical
Reset method	Magnetic spring
Flow direction	Non-reversible
Mounting position	Any
Sealing principle	Hard
Nominal width	6 mm
Short-circuit protection	yes
Display type	LED
Standard nominal flow rate	725 l/min
Operating pressure	0.4 MPa ... 0.8 MPa
Operating pressure	4 bar ... 8 bar
Typical lowering speed	15 mm/s
Note on lowering speed	When manual exhausting is actuated with cylinder diameter 80 mm, transmission ratio 1:1 and 100 kg load.
Ambient temperature	0 °C ... 50 °C
Operating medium	Compressed air as per ISO 8573-1:2010 [6:4:4]
Information on operating and pilot media	Operation with oil lubrication not possible Maximum particle size 5 µm
Degree of protection	IP65
Note on degree of protection	In mounted state
Certification	RCM compliance mark
KC characters	KC EMC
CE marking (see declaration of conformity)	As per EU EMC directive
Note on materials	RoHS-compliant
Vibration resistance	Transport application test with severity level 2 as per FN 942017-4 and EN 60068-2-6
Shock resistance	Shock test with severity level 2 as per FN 942017-5 and EN 60068-2-27
Corrosion resistance class (CRC)	1 - Low corrosion stress
Application note	The product is suitable for industrial purposes only. Radio interference suppression measures may be required in residential areas.
Nominal operating voltage DC	24 V
DC operating voltage range	21.6 V ... 26.4 V

Feature	Value
Residual ripple	5 %
Max. current consumption	1.2 A
Current consumption	120 mA
Reverse polarity protection	for operating voltage
Duty cycle	100%
Max. electrical power consumption	33.5 W
Diagnostic function	Indication via LED
Max. cable length	30 m
Fieldbus interface, connection type	Plug
Fieldbus interface, connection technology	M12x1, A-coded as per EN 61076-2-101
Fieldbus interface, number of poles/wires	5
Fieldbus interface, protocol	CAN bus with Festo protocol
Electrical connection for actuator, connection type	Socket
Electrical actuator connection, connection technology	M12x1 A-coded as per EN 61076-2-101
Electrical actuator connection, number of pins/wires	8
Pneumatic valve electrical connection, connection type	Plug
Electrical pneumatic valve connection, connection technology	Connection diagram form C as per industrial standard, 9.4 mm
Electrical pneumatic valve connection, number of pins/wires	2
Type of mounting	Direct fastening via M5 thread
Pneumatic connection 1	G3/8
Pneumatic connection 2	G3/8
Pneumatic connection 3	G3/8
Pneumatic connection for control component	G1/8
Product weight	1550 g
Housing material	Wrought aluminum alloy, anodized
Seals material	FPM HNBR NBR